



STARHOTELS®

Vespucci

FIRENZE

A flair for business meets a passion for people at the Vespucci. Situated close to Peretola Airport and opposite the I Gigli Mall in the heart of the Campi Bisenzio district, working away has never felt more like a holiday. Each of our rooms has been carefully tailored to create a home-away-fromhome for business and leisure travelers with cozy armchairs, warm cherry wood furniture and sumptuous fabrics. To unwind, there's a renowned restaurant serving international cuisine and local delicacies, or a relaxed bar for that late-night digestif.

Via San Quirico, 292/a
50010 Campi Bisenzio
Firenze - ITALY
T +39 055 89551
F +39 055 8986085
vespucci.fi@starhotels.it
starhotels.com



Rooms & Suites

Our 79 rooms are carefully designed with comfort and convenience in mind, offering the perfect balance between business and leisure.

Restaurant & bar

Our excellent restaurant and bar offer everything from light lunches to fine dining, corporate banquets and drinks receptions.

Services

Chosen with care to make your stay complete – from garage and laundry to Wi-Fi and fitness center.

Meetings & Events

Two bright, modern meeting rooms for up to 70 people and an experienced Events Manager will help deliver your event with style.







Location

The Vespucci hotel is based in the Campi Bisenzio district in northern Florence, conveniently close to Amerigo Vespucci airport. Set just outside the city center, the historic and artistic treasures of Florence are still within easy reach. A leisurely walk will take you to Calenzano railway station and a train straight to the must-see sights including the beautiful church of Santa Maria del Fiore and the Ponte Vecchio.



From the highway

- From the A1 Milano/Roma highway (2.5km), take exit Calenzano Sesto Fiorentino, go towards Prato-Centro Commerciale "I Gigli".
- From the A11 Firenze/Pisa highway (3.5km), take exit Prato Est, go towards Campi Bisenzio-Centro Commerciale "I Gigli".

From the airport

- From Amerigo Vespucci Airport (7km), take the A11 Firenze/Pisa highway, take exit Prato Est, go towards Prato-Centro Commerciale "I Gigli".



2 meeting rooms

All meeting rooms are equipped with: Wi-Fi (at a charge), sound system, screen, LCD projector⁽¹⁾, flip chart, other services are available upon request.

⁽¹⁾Max one LCD projector complimentary, additional requests at a charge

Meeting rooms	Area mq / ft.	L x W mt. / ft.	Height mt. / ft.	Theatre	Class room	Conference table/ U-shape	Cabaret style [^]	Cocktail reception	Banquet
Magellano [°]	42,75 459,99	7,50x5,70 24,61x18,70	2,9 9,51	30	20	20	10	35	30
Colombo [°]	87,8 944,73	10,70x8,20 35,10x26,90	2,9 9,51	70	30	30	35	80	65
La Polena Restaurant [°]	160 1721,6	12,50x12,80 41,04x41,99	2,9 9,51	-	-	-	-	200	140

[°] Daylight

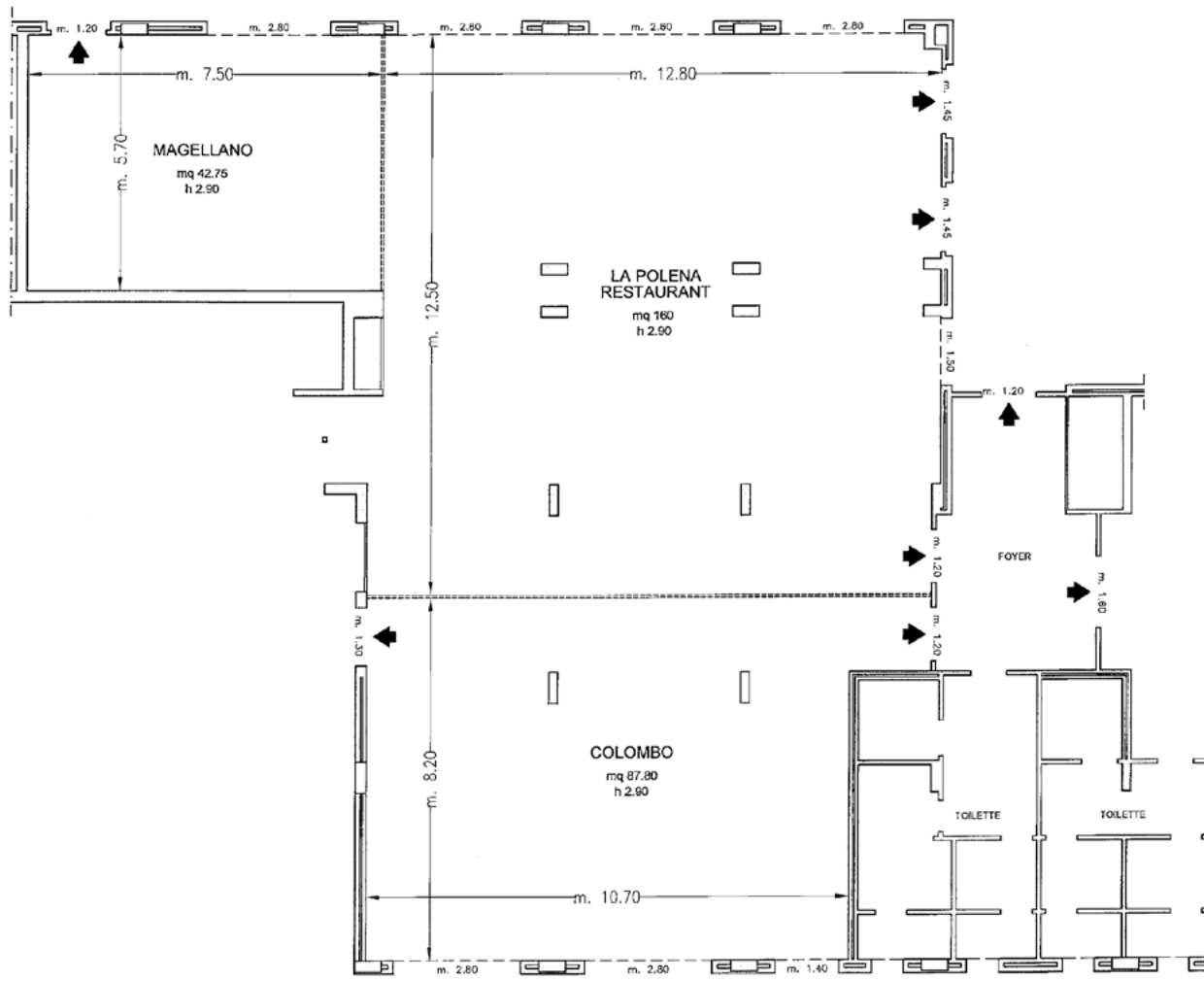
[^] Cabaret style: Diameter tables cm 12, up to 4 pax each



STARHOTELS®

Vespucci
FIRENZE

Via San Quirico, 292/a
50010 Campi Bisenzio Firenze - ITALY
T +39 055 89551 - F +39 055 8986085
meeting.vespucci.fi@starhotels.it starhotels.com



Piano Terra / Ground Floor

2 meeting room fino a 70 persone/ 2 meeting rooms up to 70 seats

➤ Uscite di sicurezza / Emergency Exits

--- Finestre / Windows

..... Pareti mobili / Modular Walls

□ Colonne / Columns

STARHOTELS

Vespucci
FIRENZE

Via San Quirico, 292/a
50010 Campi Bisenzio Firenze - ITALY
T +39 055 89551 - F +39 055 8986085
meeting.vespucci.fi@starhotels.it starhotels.com